

# Hydrangea Festival

## Hydrangea Festival Family Challenge

Hydrangeas are a favorite flower on Cape Cod in the summer. Did you know that all hydrangeas are not alike? Here at Heritage Museums & Gardens, we actually grow about 155 different kinds! To tell them apart, you need to look closely, and the challenges here will help you do just that. How many can you complete? Good luck!



### LEAF LOOK

#### BIG LEAF



LARGE, THICK LEAVES THAT CAN BE A LITTLE SHINY

FOUND IT!

#### SMOOTH



THIN, SORT OF HEART-SHAPED LEAVES THAT HAVE SURPRISINGLY ROUGH EDGES GIVEN THEIR NAME!

FOUND IT!

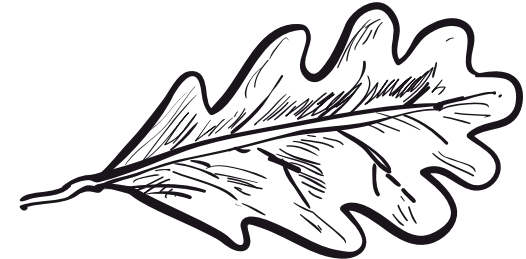
#### PANICLE



SMALLER AND THINNER LEAVES THAN ON OTHER HYDRANGEA TYPES

FOUND IT!

#### OAKLEAF

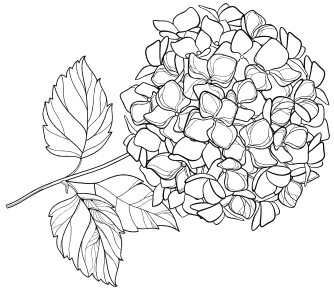


LEAVES THAT ARE SHAPED LIKE THOSE FOUND ON OAK TREES

FOUND IT!

# FLOWER FIND

Hydrangea blooms grow in different shapes, too. Can you find plants with flowers shaped like each of these?



## MOPHEAD

Large, ball-shaped flowers heads

FOUND IT!

## LACECAP

Tiny flower buds in the center surrounded by showy flowers on the edges



FOUND IT!



## PANICLE

Big, cone-shaped flower heads

FOUND IT!

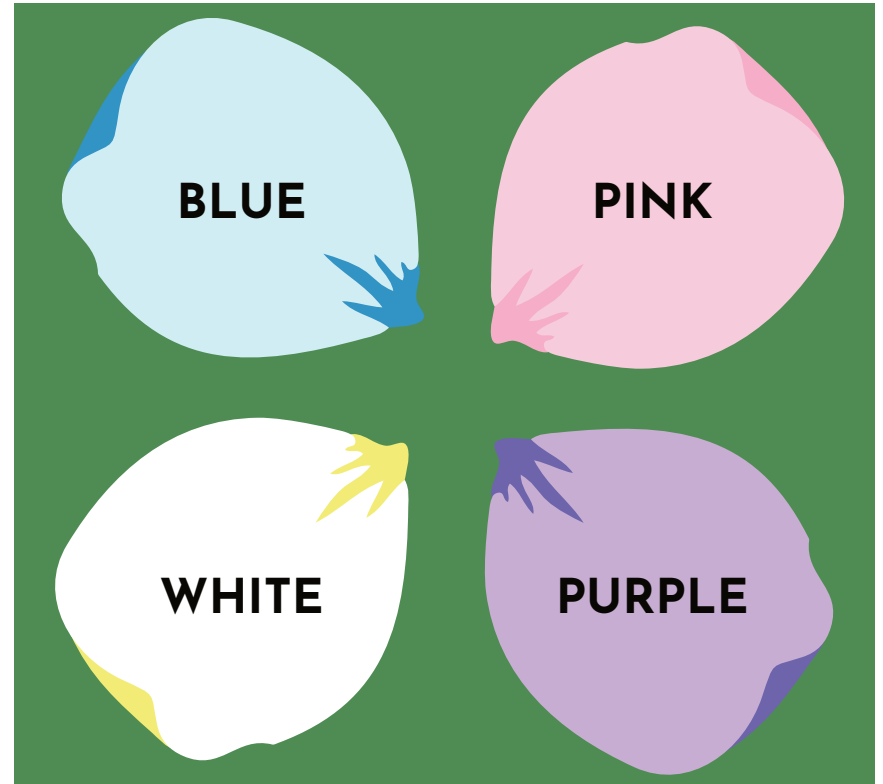
## BONUS FIND!

Can you find a climbing hydrangea? Their flowers grow on vines! (Hint: look in the Cape Cod Hydrangea Society Display Garden, or in the Hart Family Maze Garden.)

FOUND IT!

# COLOR I-SPY

Often people think of blue when they think of hydrangeas, but they actually bloom in lots of different colors! How many of these can you find in the gardens?



Describe your favorite hydrangea color that you saw today:

---

---